

Business - SERIES

OSD GRAPHIC

NETWORK DIGITAL VIDEO RECORDER



Main features

- H.264 Video Compression Technology
- Real time display & recording
- Pentaplex multi-operation
- Support audio recording
- Dual stream - record at D1 and remote view at CIF or QCIF resolution
- "PUSH VIDEO" instant alert notification
- XF CMS (Central Monitoring Software), support up to 64 channel per screen
- User friendly color OSD icon menu
- 3G/GPRS mobile devices remote surveillance (Support iPhone/iPad & Android devices)
- Full function network remote view via Internet Explorer / LAN
- PTZ camera control with multiple protocol & baud rate
- Built in USB2.0 port x 2 for video backup & mouse operation
- USB mouse and wireless remote control operation



Supported Remote View Browser and MOBILE OS -



Performance

High Stability

Quality

Full function network capabilities

1

"PUSH VIDEO" NOTIFICATIONS

Instant event notification with video to your iPhone, iPad and Android mobile devices.

"Push Video" notification support events such as

- 1) Video Loss
- 2) DVR IP Conflict
- 3) Hard Disk Storage Full
- 4) Hard Disk Storage Error
- 5) Motion Detection on pre-selected channel
- 6) Alarm sensor triggered that is connected to your DVR



2

FULL WD1 (960H) VIDEO RESOLUTION

WD1 high resolution video for display & recording



704 pixels x 576 pixels
Total pixels: 405504K



928 pixels x 576 pixels
Total pixels: 534528K

3

ERROR TROUBLE ALERT

Auto pop-up alert notification icon on live screen with buzzer beep to alert users for dvr malfunctions. Support IP conflict, HDD Error, HDD full and etc.



4

FREE DDNS SERVER ACCOUNT

No more unstable 3rd party DDNS server for dynamic IP internet users



Digital Video Recorder (DVR) with dynamic IP internet connection

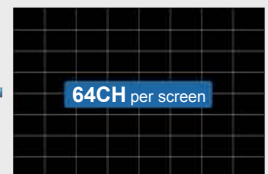


Mobile Devices
remote view by internet

5

POWERFUL XF CMS SOFTWARE

XF Central Monitoring Software (CMS) supports up to 64 Channel camera view per screen with unlimited DVR account. Ideal for remote monitoring all your DVR's at the same time in a single screen. CMS also supports playback, PTZ camera controls and full function DVR settings



XF CMS SOFTWARE

6

1080P HDMI DISPLAY OUTPUT

Clearer and crispier display video for Full HD monitor

HDMI
HIGH-DEFINITION MULTIMEDIA INTERFACE

**Full HD
1080**

7

3G WIRELESS INTERNET

Support 3G wireless internet connection for rural areas that do not have fixed line internet connection



HSPDA / 3G dongle

8

1 CLICK VIDEO LOCK

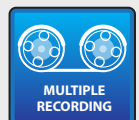
Preserved important recorded video files from being deleted or overwritten when HDD storage are full



9

MULTI RECORDING MODES

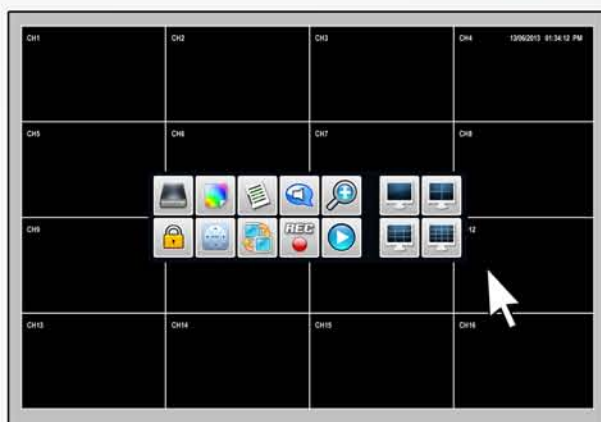
Support motion detection with area selection, calendar scheduled, sensor trigger, 24 hours and emergency recording mode. Programmable each camera channel with different recording mode



10

USER FRIENDLY OPERATION

with large icon OSD interface, just click on the icon using your mouse



Main live OSD screen



Menu setup screen



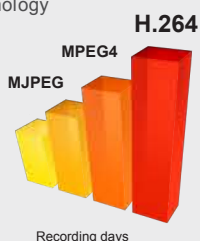
11

H.264 VIDEO COMPRESSION

Using the latest video compression technology for better video quality, smaller video file size and longer recording period compare to MPEG4 or other compression format



Hard Disk Drive

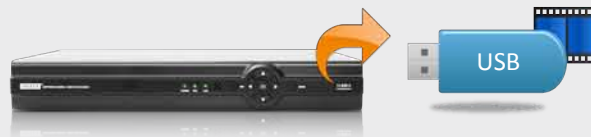


Recording days

12

1 STEP VIDEO BACKUP TO USB DRIVE

Backup your recorded video to any USB2.0 storage drive in just 1 step. NO more complicated & confusing procedure for video backup



13

EXPRESS EMAIL EVENT NOTIFICATION

Email notification with full status report and video snapshot attached to your mobile phone or PC



14

DVR SETTINGS VIA MOBILE DEVICES

Anytime & anywhere, modified & change your DVR settings on your mobile devices via 3G internet.



Model: XF4
4CH Video input / 4CH Audio input



DISPLAY: 120fps. real time
TOTAL RECORDING FPS.:
WD1/960H x 4 (120fps.), D1 x 4 (120fps.),
HD1 x 4 (120fps.), CIF x 4 (120fps.)

Model: XF8
8CH Video input / 4CH Audio input



DISPLAY: 240fps. real time
TOTAL RECORDING FPS.:
WD1/960H x 4 + CIF x 4 (210fps.), D1 x 8 (120fps.),
D1 x 4 + HD1 x 4 (210fps.), CIF x 8 (240fps.)

Model: XF16
16CH Video input / 2 CH Audio input



DISPLAY: 480fps. real time
TOTAL RECORDING FPS.:
WD1/960H x 4 + D1 x 12 (210fps.), D1 x 16 (210fps.),
D1 x 12 + HD1 x 4 (240fps.), CIF x 16 (480fps.)

Product Specifications

MODEL	XF4	XF8	XF16
VIDEO & AUDIO			
Camera Input	4 Channel (BNC)	8 Channel (BNC)	16 Channel (BNC)
Video Compression	H.264		
Display Output	CVBS main monitor (BNC) x 1		
VGA Output	VGA x 1 (selectable video screen size 1024x768, 1280x1024, 1366x768, 1440x900, 720P, 1080I, 1080P)		
HDMI Output	HDMI x 1 (selectable video screen size 720P, 1080I, 1080P)		
Audio	4 CH input & 1 CH output (RCA)		2 CH input & 1 CH Output (RCA)
RECORDING & PLAYBACK			
Recording Mode	Continuous, Manual, Event (Motion Detection / Video Loss Trigger), Schedule & Emergency		
Watermark Function	Yes		
Pre-Alarm Recording	Yes, selectable 0~10 sec.		
Post-Alarm Recording	Yes, selectable 10 sec.~30 min.		
SYSTEM & STORAGE			
Operating System	Embedded Linux OS		
Internal Recording Storage	HDD x 1 (total 2TB)		
External Recording Storage	N/A		Support eSATA
HDD Auto Overwrite	Yes, first in first out (FIFO)		
I/O Input & Output	N/A		4 alarm/sensor input, 1 relay output
RS485	Yes, Support Pelco D, Pelco P, Pelco D_JEC, Pelco D_WJ, ABK2001, ABK2007, ACES-HN, EE, HT600, HY, Samsung, Yaan, Philips, Lilin, SAE, YLDVR, GRX2000, Jabsco D, Kallaita, B01, Panasonic, SONY, SYTY, V1200, Visdom, KonyM800, KonyMTR500 with selectable baud rate 1200bps. ~ 9600bps.		
Factory Default Reset	Yes, with selectable individual category reset		
Password Protected Menu Settings	Yes		
Auto Lock Menu Settings	Yes, with selectable time (30 sec.~10 min.) after unlock		
SPECIAL FEATURES			
Push Notification	Push message and video link to your smart phone (iPhone or Android) upon motion, sensor trigger, video loss, HDD error, HDD full or IP address conflict		
Notification	Email with video snapshot & internal buzzer notification upon motion, sensor trigger, video loss, HDD error, HDD full or IP address conflict		
PTZ Automation	Motion, sensor trigger, video loss, HDD error, HDD full or IP address conflict to PTZ preset position or PTZ cruise activation		
NETWORK			
Network Interface	10/100 Ethernet (RJ45)		
Protocol Supported	TCP/IP, SMTP, HTTP, DHCP, PPPoE (ADSL), NTP, 3G (USB broadband dongle)		
Supported PC Remote View OS	Window XP, 7, 8, Internet Explorer 8 and above & MAC OS		
Remote View User Account	1 Admin + 7 users (selectable permission level)		
Central Monitoring Capabilities	Yes, provided with free XF CMS software (64 cameras per screen / support unlimited dvr)		
Mobile Phone/Device Remote View	Yes, with full DVR settings via 3G internet		
Supported Mobile Remote View OS	iPhone, iPad, Android 2.1 or above		
VIDEO & AUDIO BACKUP			
Backup Interface	USB2.0		
Network Video & Audio Backup	Yes, supported		
Supported Backup Storage	USB Flash Drive, External USB HDD storage		
ON SCREEN DISPLAY (OSD)			
Graphic User Interface (GUI)	32-bit true color OSD		
OSD Language	English, Simplified Chinese, Italian, Portuguese, Spanish, French, Russian		
CONTROL & FIRMWARE			
Operation control devices	Support USB2.0 mouse (included), IR wireless remote control (included)		
System Firmware Upgrade	Via USB, Network or Internet		
POWER & DIMENSION			
Dimension	317mm (W) x 230mm (L) x 47mm (H)		
Weight	Approx. 1.2kg (without box & HDD)		
Power Input	220VAC or 110VAC		



Live view



Playback screen with time bar



Menu setup screen



Main live OSD screen

Authorised Dealer:

INOX SECURITY PTY. LTD.

- Canada (Incorporation No. BC 0722077)

INOX MANUFACTURING (M) SDN. BHD.

- Malaysia (Company No. 671850-H)

www.inox.com.my

Specifications, description and design are subject to change without prior notice.
The brands and products names are properties of their respective owners
Pictures used in this catalog are for illustration purpose only

